

# MONTHLY MEMBERSHIP PROGRESS REPORT

LOCATION SOUTH CAROLINA

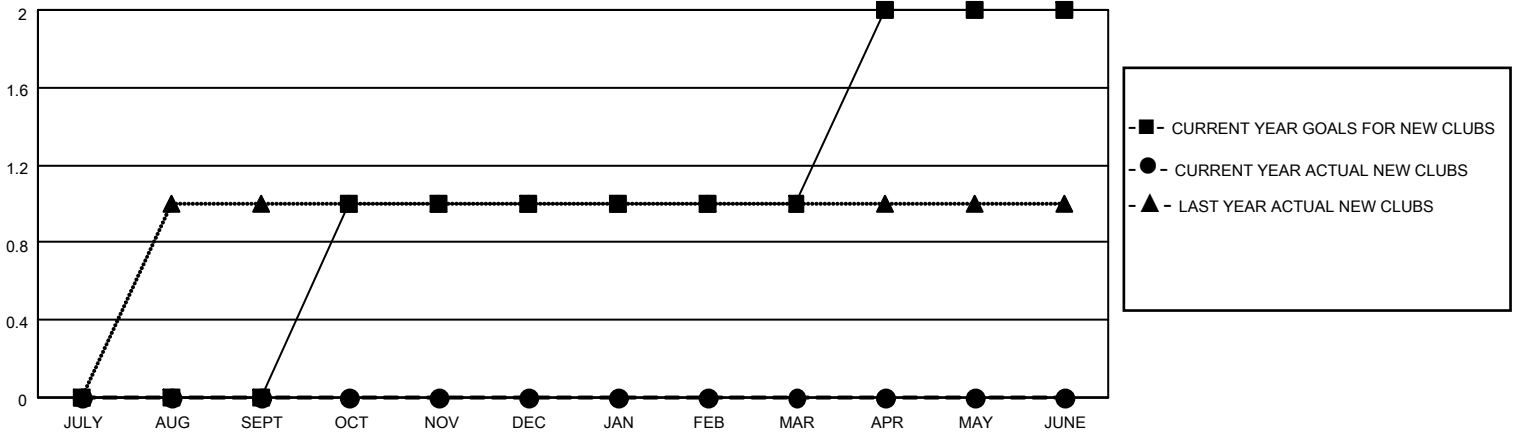
District 32 S

Results as of: 4/30/2022

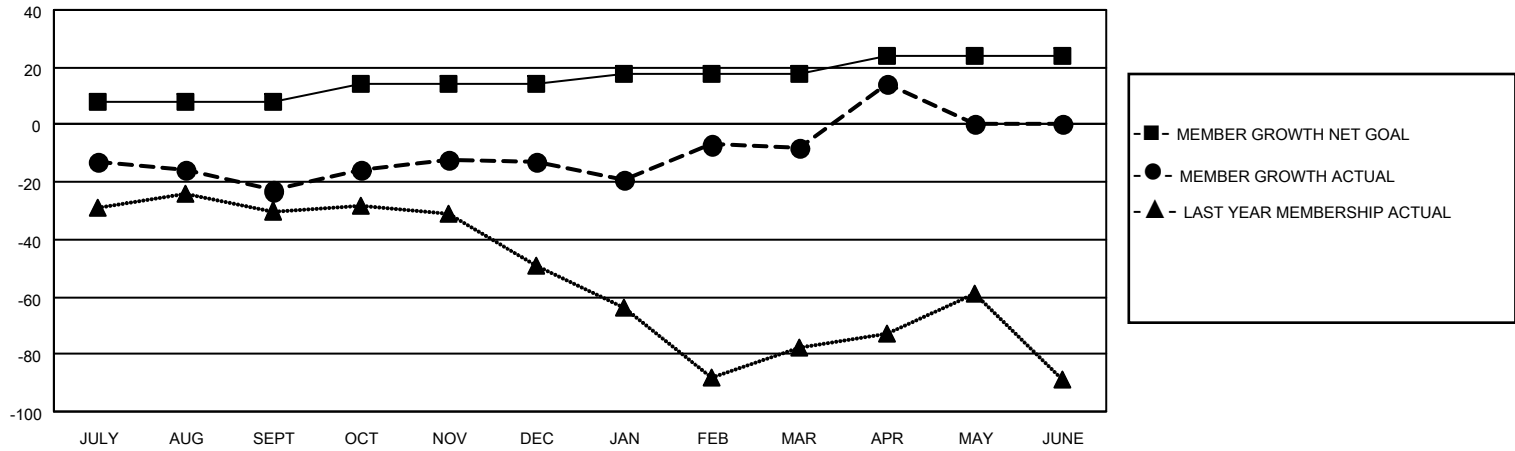
Clubs			
RESULTS FOR 2021-2022			
QUARTER	NEW CLUB GOAL	NEW CLUBS	DROPPED CLUBS
JULY/AUG/SEPT	0	0	1
OCT/NOV/DEC	1	0	0
JAN/FEB/MAR	0	0	0
APR/MAY/JUNE	1	0	0

Members			
RESULTS FOR 2021-2022			
QUARTER	MEMBER GROWTH NET GOAL	MEMBER GROWTH ACTUAL	DROPPED MEMBERS ACTUAL (including transfers)
JULY/AUG/SEPT	8	70	77
OCT/NOV/DEC	6	59	45
JAN/FEB/MAR	4	66	58
APR/MAY/JUNE	6	38	8

**GOALS AND ACTUAL NEW CLUBS CUMULATIVE**



**GOALS AND ACTUAL MEMBERS CUMULATIVE**



**DROPPED CLUBS: 1**

**40 CLUBS OF 64 ADDED 1 OR MORE NEW MEMBERS**

**GENDER DISTRIBUTION**

MALE	1,054 (62.48%)
FEMALE	633 (37.52%)
NON BINARY	0 (0.00%)
PREFER NOT TO ANSWER	0 (0.00%)

**DROPPED MEMBERS**

[CLICK HERE FOR CUMULATIVE MEMBERSHIP DATA](#)

DECEASED	26
CLUB CANCELLED	12
OTHER	150
<b>TOTAL</b>	<b>188</b>

TOTAL FAMILY UNIT MEMBERS 376

FAMILY MEMBERS PAYING HALF DUES 191